



ARCHITECTURE POR FOLIO

Architects of the Extraordinary: Designing Beyond the Conventional.

OUR STORY

We at Studio AIRD, a **HOLISTIC ARCHITECTURAL FIRM** began our journey in January 2021 with just 2 architects in a coworking space & now have 20 team members in multiple locations that offers end-to-end services.

With core focus on **ARCHITECTURE, INTERIOR, AND RETAIL DESIGN** ensuring tailored solutions for clients via our diverse portfolio which encompasses projects ranging from commercial buildings to corporate offices & from residential villas to retail spaces.

Aimed to be ranked among **TOP 50 ARCHITECTURE FIRMS IN INDIA**, our commitment to excellence is unparalleled.

VISION

To be a leading force in India's architectural landscape, crafting sustainable and innovative spaces that inspire and empower communities.

MISSION

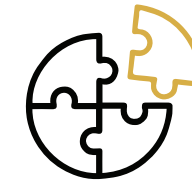
To achieve exceptional and sustainable design, integrating values of integrity & combining creative problem-solving with cutting-edge technology.

With innovative approaches that ensure architectural solutions that seamlessly blend into a productive way while minimizing environmental footprint.

PROCESS



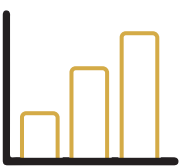
DEFINE



DESIGN



DEVELOP



DELIVER



OUR FOUNDERS



Satish Sharma

The driving force behind Studio AIRD, a visionary leader with over 20 years of experience has an award-winning portfolio that showcases a unique blend of artistic creativity with technical prowess, resulting in innovative and sustainable architectural solutions that benefit the environment.

A collaborative leader with a creative passion, holds a B.Arch. degree from NIT Bhopal and an MBA from Fore School of Management is now shaping India's architectural future generations.

He's an esteemed Jury member of In-Store Asia, the premier retail event in the Indian Sub-continent.



Nimisha Magdani

Nimisha, a passionate reader and traveler, brings over 20 years of experience in architecture and retail design.

Known for her meticulous approach, she has earned numerous awards for design excellence at Shoppers Stop.

Nimisha excels in transforming design concepts into detailed working drawings and collaborates effortlessly with multidisciplinary teams.

Her role allows her to combine her love for design and architecture with a focus on consumer-centric branding, making her an invaluable asset in the industry.

OUR TEAM



SHILPA BHAVE
Associate Director



PRASHANT PURAV
Associate Director



NEETU MISHRA
Senior Architect



VIPUL NATHWANI
Head - Business
Development



PRAKASH SAWANT
Sr. 3D Visualizer



PRAMOD KAMBLE
3D Visualizer



DIPTI DALVI
Interior Designer



**PRIYANKA
SAWANT**
Interior Designer



TINA SHARMA
Head - Business
Development
(North)



At Studio AIRD, we are an interdisciplinary team of Architects, Interior Designers, Engineers, Environmental Specialists, and Cultural Researchers dedicated to crafting spaces that address the emerging future of work, leisure, and living.



OUR SERVICES

1 ARCHITECTURE

We specialize in crafting bespoke solutions, merging technology and aesthetics to bring spaces to life. From sketches to digital plans and meticulous construction supervision, we ensure your vision transforms into reality.

RESIDENTIAL INTERIORS

We specialize in crafting residential interiors that prioritize comfort and livability, whether new or renovating existing spaces. Our aim is to transform your space into a warm and inviting home.

2 RETAIL

We customize ambient concepts, infusing your brand essence into every detail, from façade to furnishings. Our expertise in retail design ensures elevated shopping experiences, driving lasting customer satisfaction and loyalty.

DESIGN EDIT

Reimagining retail spaces for tomorrow's success. We optimize layout, enhance façade, and elevate mall interiors to maximize GLA and foot traffic, ensuring an unparalleled shopping experience.

3 CORPORATE INTERIORS

Office interior design profoundly influences employee productivity. We specialize in functional yet aesthetic workspaces that reflect your brand narrative, fostering productivity and creativity.

DESIGN BUILD

Envision, design and build - all seamlessly integrated. We expertly handle every aspect of your project. From concept to completion, we prioritize deadlines and ensure a smooth, coordinated process.

4

5

6

ARCHITECTURE

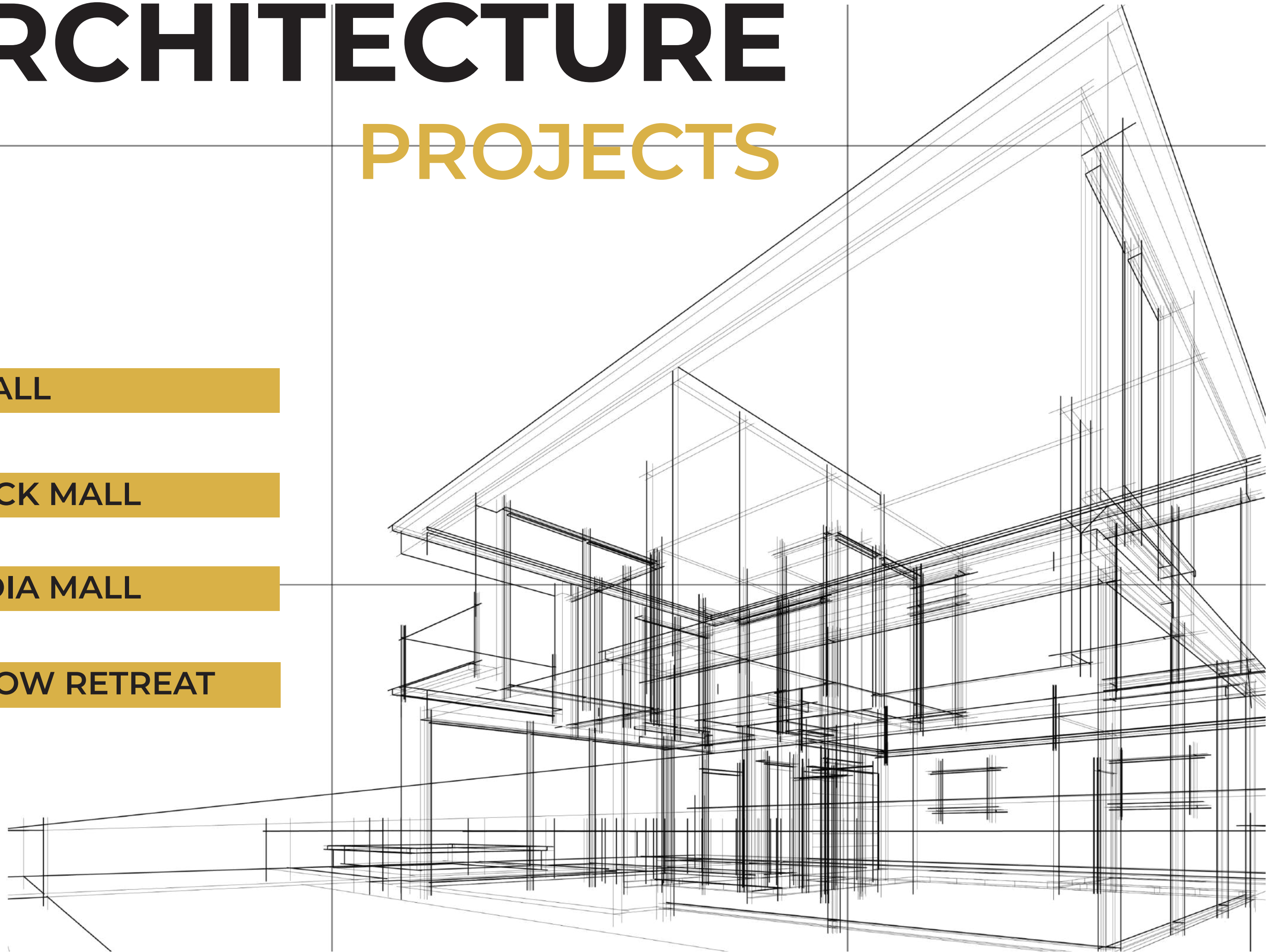
PROJECTS

PVS MALL

CUTTACK MALL

ARCADIA MALL

RAINBOW RETREAT

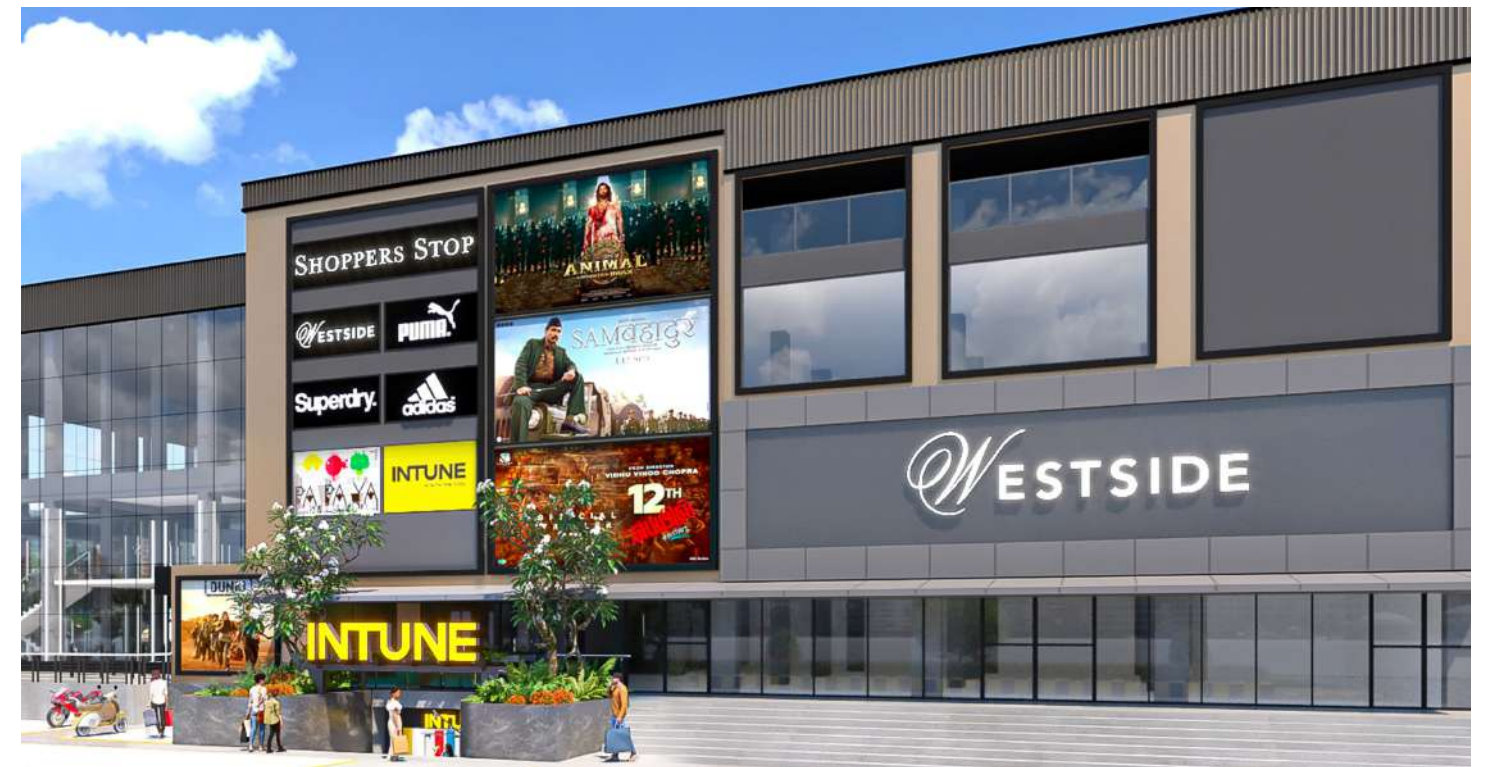




Makeover of PVS Mall

Location : Meerut

PVS Mall in Meerut's transformation offers a modern and diverse experience. Clean lines, glazing, and battens create a fresh facade. Large tiles and minimalist flooring with transparent elements welcome visitors and ensure easy navigation with showcased merchandise. Anchor stores, shops, cinemas, and rooftop dining cater to all, with modern touches like glass boxes and LED screens enhancing the shopping experience. PVS Mall thrives as a vibrant destination for entertainment and shopping.



Project Year : WIP

Type : Architecture

Built up Area : 2,50,000 sq. ft.

Scope Of Work: Architecture / Interiors /
Facade Design.



Project 02



Arcadia Mall

Location : Vapi

Arcadia Mall, situated on a prime 3000 sq m plot along the National Highway, boasts a total retail area of 125,000 sq ft with two 25,000 sq ft basements for parking and MEP services. Its design divides the mall into two interconnected sections linked by bridges on each level, ensuring seamless flow. A prominent 35,000 sq ft anchor store spans three floors, complemented by diverse line shops, upscale dining, and a family entertainment center. The minimalist facade offers elegance and additional rental spaces. Emphasizing efficient traffic circulation, the Vapi mall guarantees a smooth and enjoyable visitor experience.



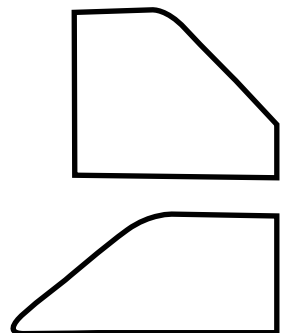
ARCADIA
Logo

Project Year : WIP

Type : Architecture

Built up Area : 1,75,000 sq ft.

Scope Of Work : Architecture / Interiors / Facade Design.



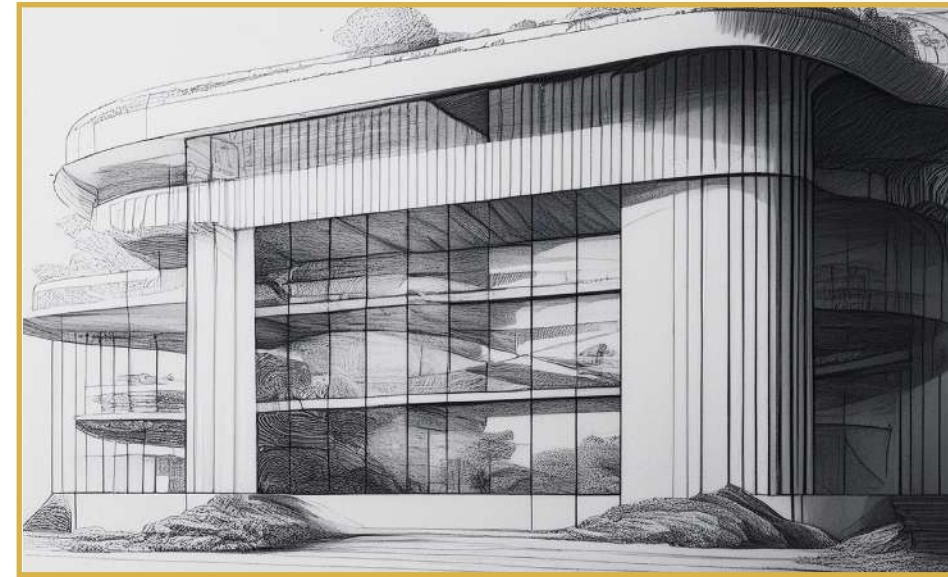


Project 03

Cuttack Mall

Location : Meerut

Designing a new 200,000 sq ft mall in Cuttack's posh area, accessible from three sides. The contemporary building includes a 30,000 sq ft anchor store spread over three floors, line shops on each floor, a 4th-floor food court, and a family entertainment center. A multi-floor atrium enhances natural light and hosts seasonal displays and events. Features include themed retail sections, diverse entertainment facilities, and two basements for ample parking. Incorporating green building practices such as energy-efficient lighting, water-saving fixtures, and waste management systems. Advanced surveillance systems and security personnel ensure a safe shopping environment, making the mall a vibrant community hub.



Project Year :
WIP
Type :
Architecture
Built up Area :
200,000 sq ft.
Scope Of Work :
Architecture /
Interiors /
Facade Design.



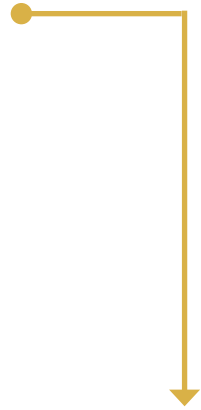
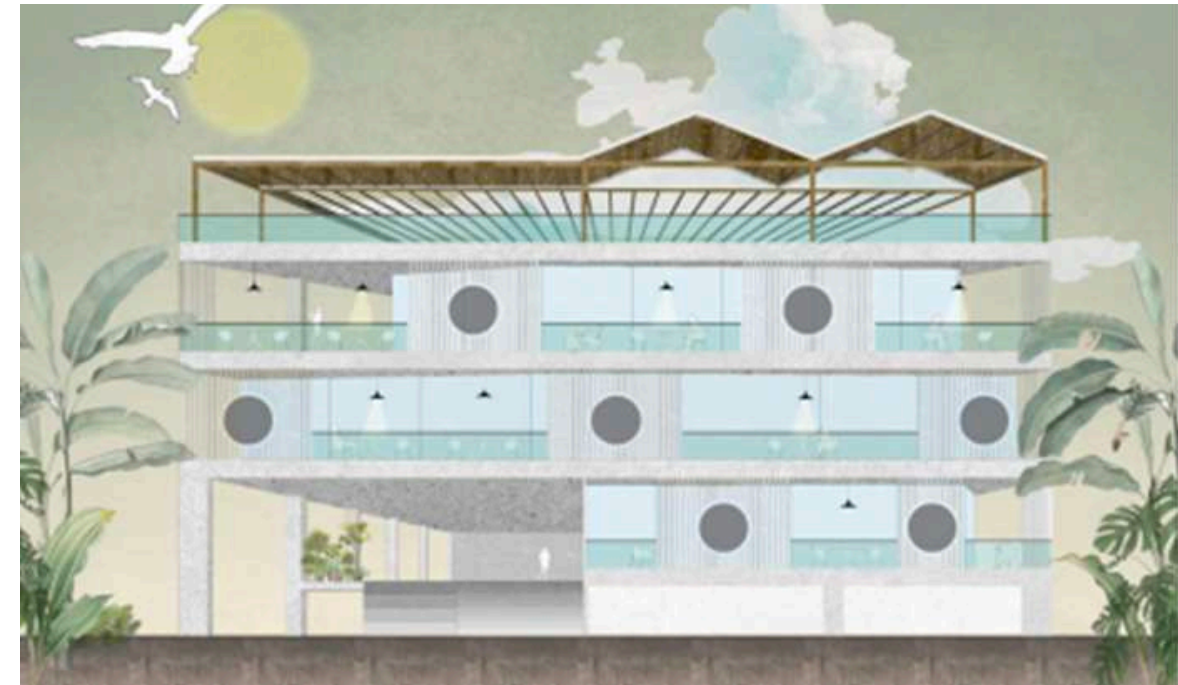
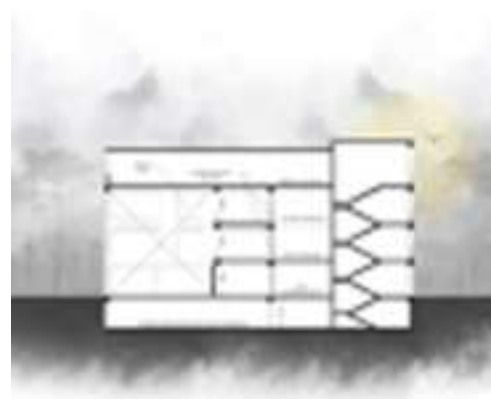
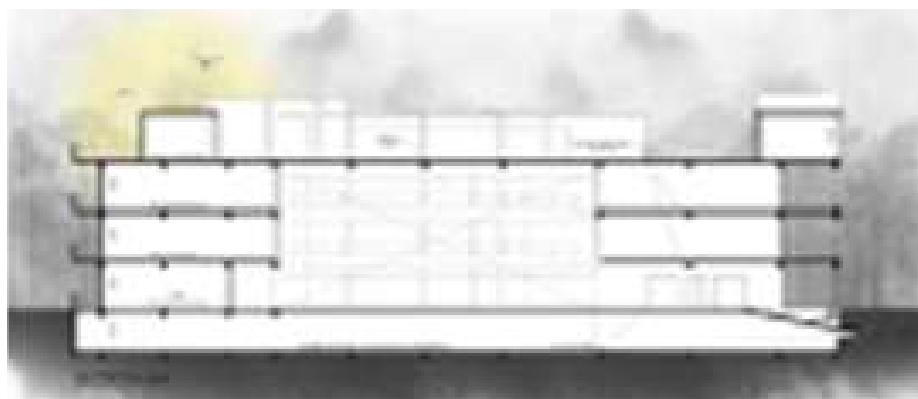
Project 04



Rainbow Retreat

Location : Bhopal

Rainbow Retreat, situated on Shahpura Lake in Bhopal, is a premier fine dining destination comprising a basement and four floors. The design maintains the building's overall footprint while featuring angled glazing for each restaurant unit, resulting in distinctive and dynamic geometric forms. This approach provides unique and varied views from every restaurant. To meet branding needs, each restaurant will have a circular logo on the facade, complemented by a comprehensive branding directory on the transformer unit facade. This design not only enhances the building's visual appeal but also maximizes brand visibility for each dining establishment.



Project Year :
WIP

Type :
Architecture

Built up Area :
60,000 sq ft.

Scope Of Work:
Architecture /
Interiors /
Facade Design.



RETAIL PROJECTS



HOMESTOP

NYKAA LUXE

WOLOO



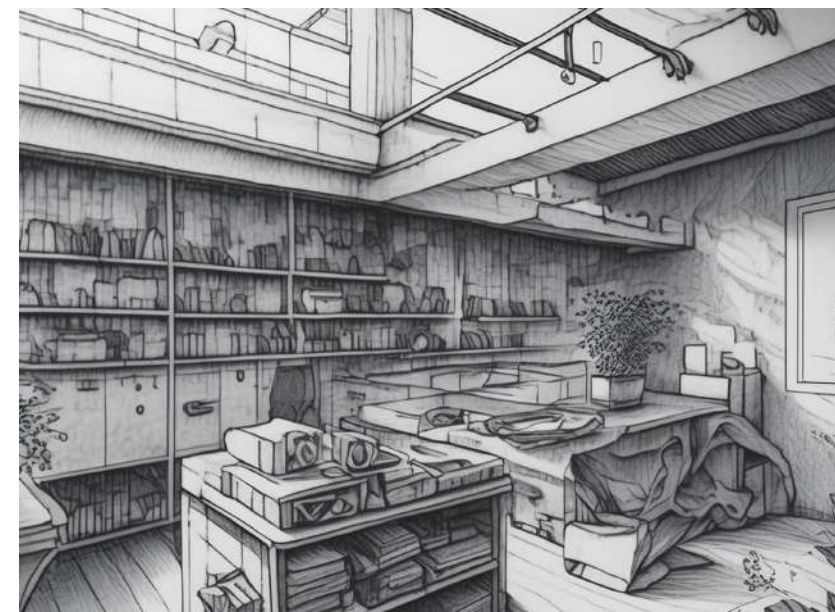
Project 05



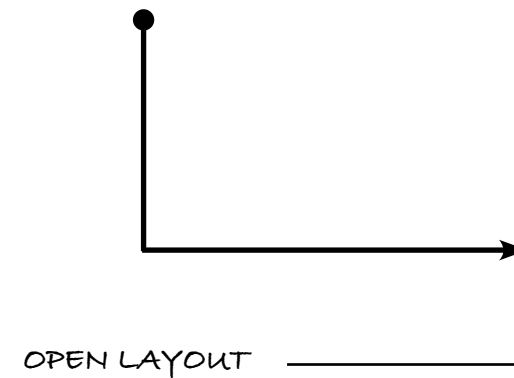
Homestop

Location : Dehradun

Dehradun's HomeStop offers a delightful shopping experience! Spacious layout and easy navigation create a relaxing, minimalist haven. Earthy tones, low fixtures, and vibrant displays encourage exploration. Backlit visuals and streamlined checkout minimize wait times. Strategic lighting enhances product appeal, making shopping a pleasure. This HomeStop caters to diverse needs with a wide variety, redefining convenience and satisfaction.



Project Year : 2023
Type : Retail Project
Built up Area : 5,000 sq ft.
Scope Of Work: Interior Design/ Lighting / MEP Services.



EFFICIENT DISPLAY OF PRODUCTS



Project 06



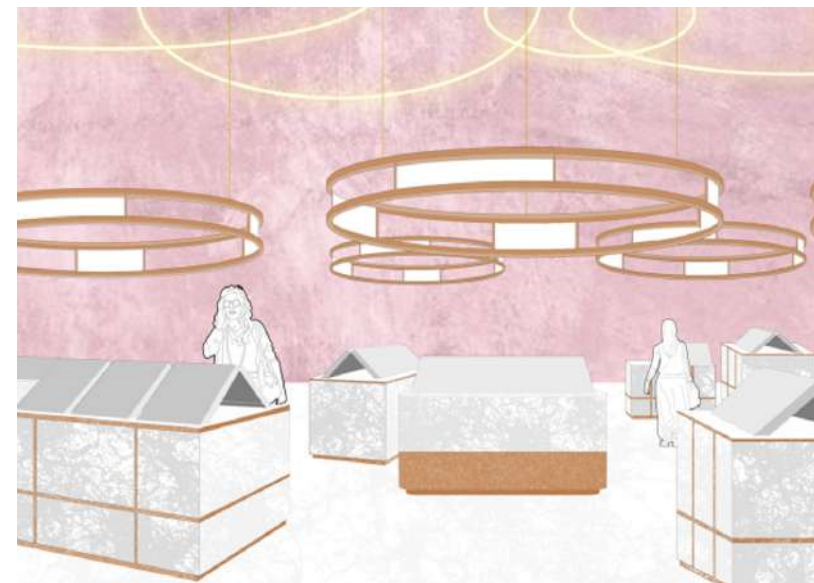
Nykaa Luxe

Location : Kolkata

We created a luxurious beauty destination in Kolkata! The 8,000 sq ft Nykaa Luxe store at Quest Mall transforms with Italian marble, rich materials, and inviting lighting. Circular canopies showcase premium brands, while convenient cash counters and a coffee shop add a touch of luxury. Well-lit makeup stations with captivating LED screens make product exploration a joy. This Nykaa Luxe caters to beauty enthusiasts with a vast selection of national and international brands, redefining Kolkata's beauty retail experience.



CIRCULAR CANOPIES



Project Year : 2022
(Unbuilt)

Type : Retail Project

Built up Area :
8,000 sq ft.

Scope Of Work:
Interior Design/
Lighting / MEP
Services.

PREMIUM BRANDS



MAKEUP STATIONS





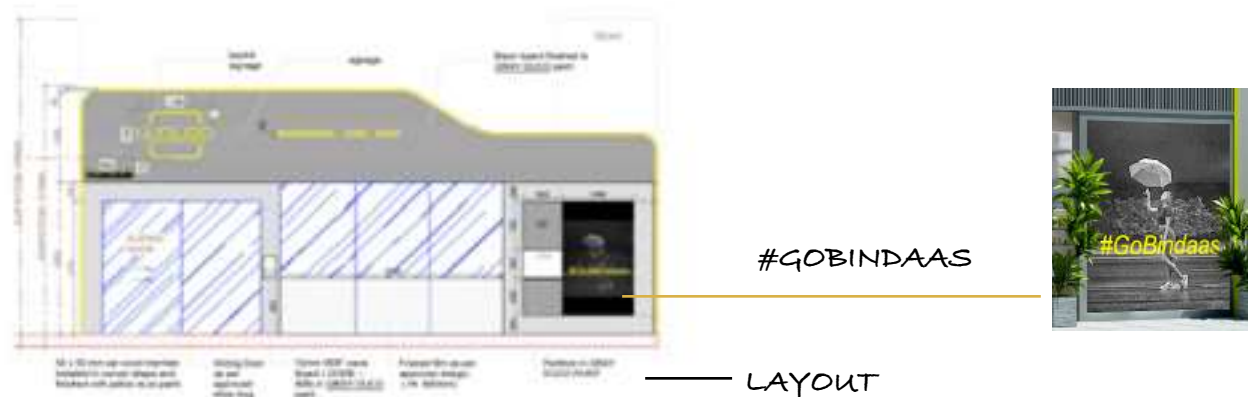
Woloo

Location : Mumbai

Presenting the Woloo Powder-Room Lounge, India's first and only by-women-for-women chain of Powder-Rooms for women of all ages & diversity catering to their hygiene dignity along with a Café and store for women centric products. Equipped with a hygienic, clean, and safe toilet for women with the facility to change baby diapers, a Café for a quick breather or a bonding session with the besties, and a store that sells women centric wellness products, the Woloo Powder Rooms offer a world-class experience. The next time you feel the need to just take a break, from the chaos of the outside world, just locate a Woloo Powder Room through the Woloo app!



Project Year : 2020
Type : Retail Project
Built up Area : 2,000 sq ft
Scope Of Work: Architecture / Interior Design / MEP Services.



CORPORATE INTERIORS

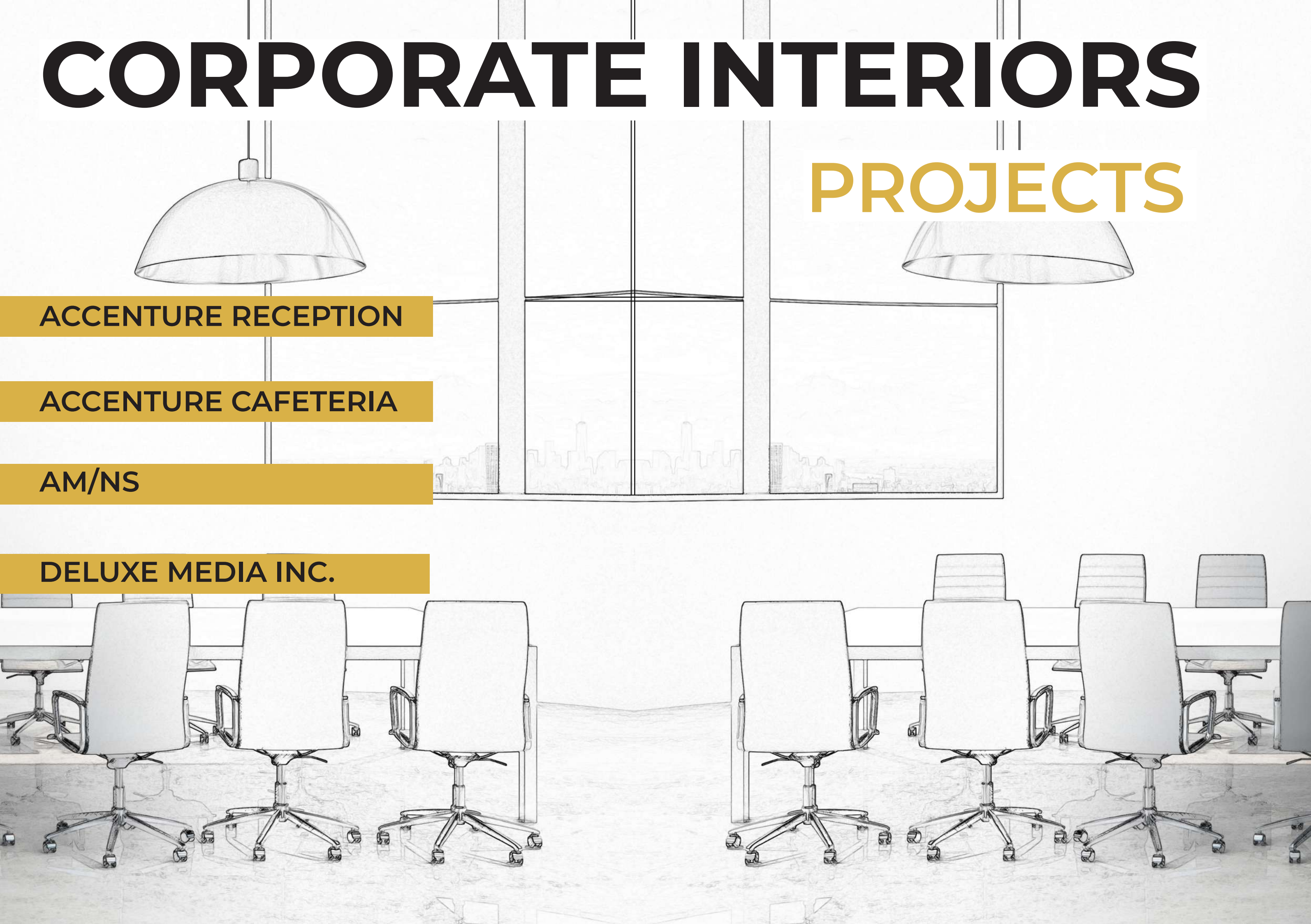
PROJECTS

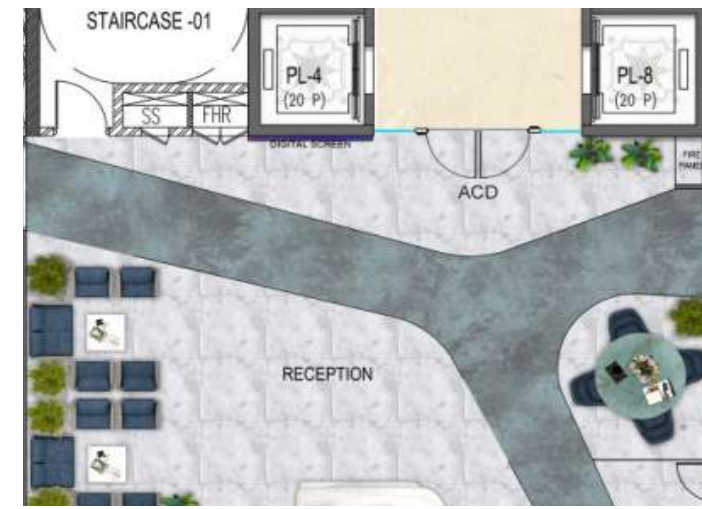
ACCENTURE RECEPTION

ACCENTURE CAFETERIA

AM/NS

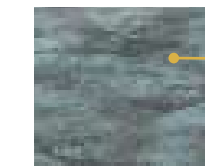
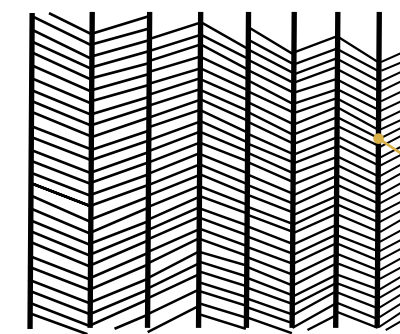
DELUXE MEDIA INC.





Status : WIP
Type : Corporate Interiors
Built up Area : 3,000 sq ft.
Scope Of Work: Interior Design/
 Lighting / MEP Services.

PATTERN



BLUEISH GREY TILES



Reception at Accenture

Location : Bengaluru

Accenture's Bengaluru reception transformed to enhance visitor flow. A modern aesthetic featuring bluish-grey tiles and a minimalist design greets visitors. The visible reception desk offers accessibility features, while strategically placed waiting areas and a meeting room ensures comfort and professionalism. Accenture's branding is incorporated through the logo on the counter and fabric light boxes. Metal jali elements provide a touch of privacy without sacrificing openness. Strategically placed greenery adds a natural touch, creating a welcoming environment that reflects Accenture's values.



Cafeteria at Accenture

Location : Bengaluru

The cafeteria is now a vibrant hub for employee well-being and collaboration. Floral walls, open ceilings, and natural light energize the space. A dedicated town hall with the latest tech fosters teamwork and events. Biophilic design promotes well-being by connecting employees with nature. A recreational area provides relaxation, while playful patterns and hanging lights add visual interest. This isn't just a cafeteria anymore; it's a hub for creativity & collaboration.

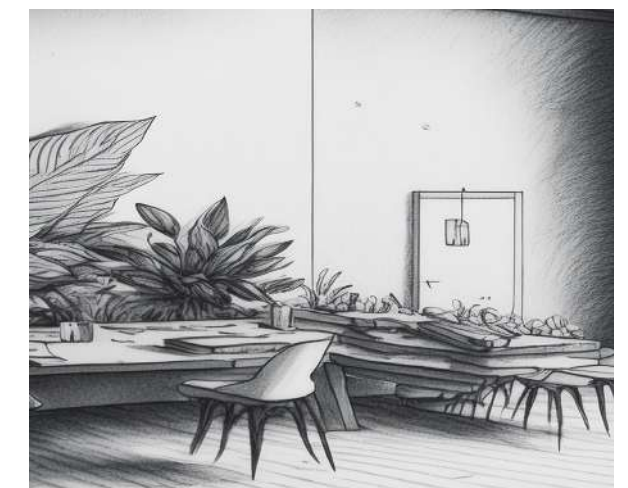


Status : WIP

Type : Corporate Interiors

Built up Area : 5,000 sq ft.

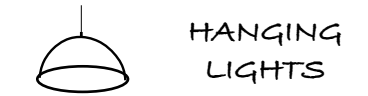
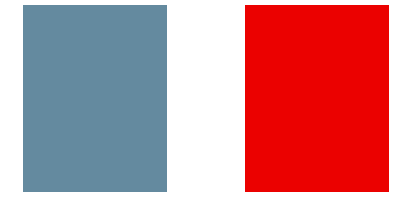
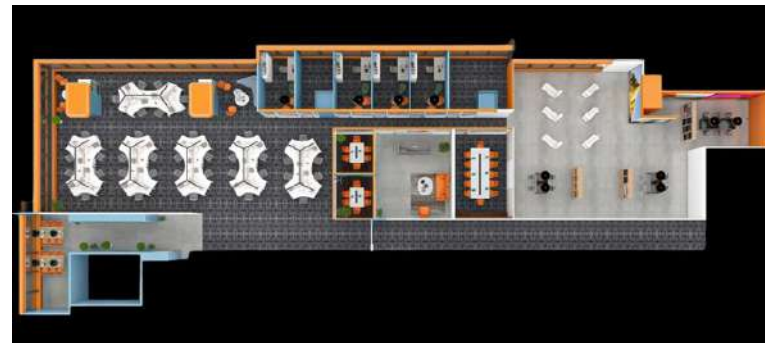
Scope Of Work: Interior Design / Lighting / MEP Services.



AM/NS

Location : Vikroli

AM/NS Mumbai's 10,000 sq ft office at Godrej Tower got a makeover! Natural materials, a living green wall, and open spaces create a welcoming and collaborative atmosphere. Spacious cabins, glass partitions, and modern meeting rooms cater to diverse needs. Biophilic design promotes well-being, aligning with the building's green certification. This project showcases our expertise in creating sustainable & inspiring workspaces!



HANGING LIGHTS

ILLUSTRATIONS



SUSTAINABLE WORKSPACES



Project Year : 2023
(Unbuilt)

Type :
Corporate Interiors

Built up Area :
10,000 sq ft.

Scope Of Work:
Interior Design/
Lighting / MEP
Services.



Deluxe Media Inc.

Location : Andheri West

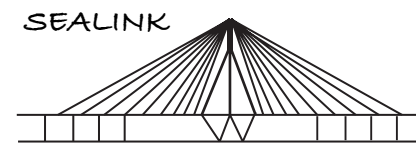
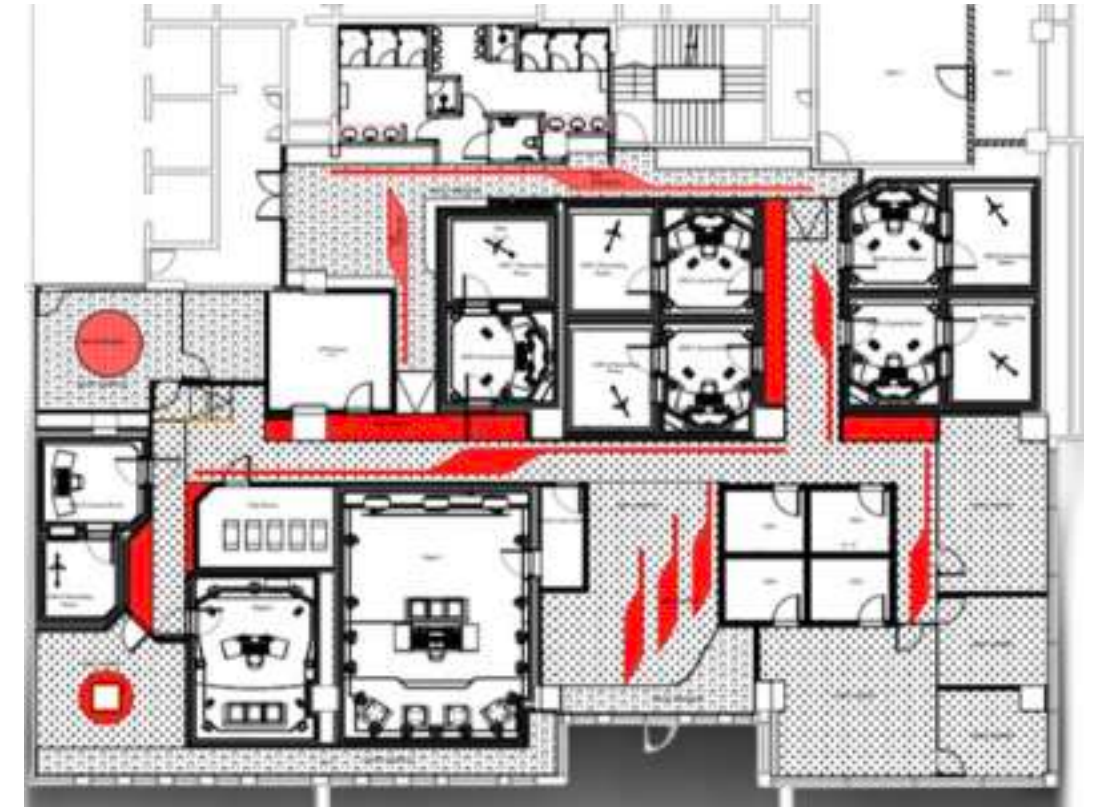
The design concept for Deluxe Media INC's 10,000 sq ft facility in Andheri West is inspired by the red hue of the Deluxe logo and the vibrant essence of Mumbai. The interior features a distinctive stretched leaf motif that symbolizes the company's journey, integrated into ceiling light fixtures and carpet designs to ensure a unified look. The facility boasts five auditoriums of various sizes, specifically designed for dubbing films and serials in Indian languages, with raised flooring to facilitate IT and precise instrumentation wiring. Acoustics, tailored to Indian conditions by an international consultant, complement the facility's minimalistic and streamlined aesthetic, which is consistently applied across its single-story layout.



MOODBOARD



LAYOUT



ILLUSTRATIONS

MUMBAI CITY SILHOUETTE



Project Year : ...
Type : Corporate Interiors
Built up Area : 10,000 sq ft.
Scope Of Work: Interior Design / Lighting / MEP Services.

RESIDENTIAL INTERIORS

PROJECTS

Mr. SALIL NAIR'S HOUSE

Mr. SETHI'S HOUSE

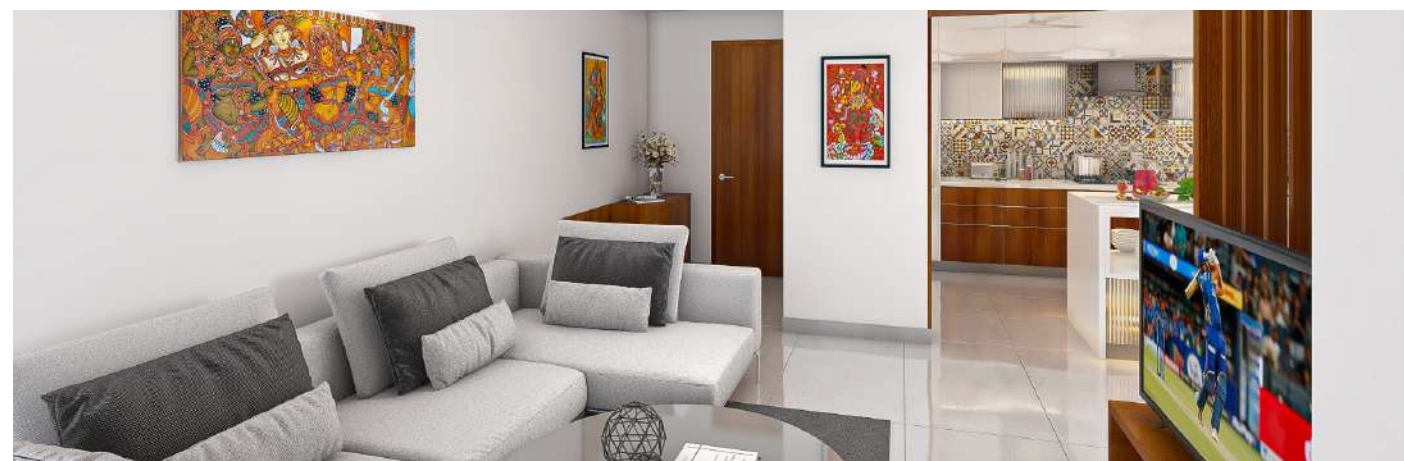


Project 12

Mr. Salil Nair

Location : Kozhikode

Mr. Salil Nair's 1500 sq ft apartment, located in a prime Kozhikode area with sea beach views, features a minimalist design with white and teakwood finishes. The residence includes three bedrooms, a living room, and a kitchen tailored for Indian cooking, complete with additional storage for food grains and modern appliances. The interior layout is designed to optimize natural light in every room, following Vastu principles closely, with a mandir strategically positioned between two rooms in the recommended direction.



KITCHEN



CHECKERED TILES

WOODEN CABINETS

HALLROOM



Project Year : 2023

- 2024

Type :

Residential Interiors

Built up Area : 1500

sq ft.

Scope Of Work:

Turn Key.

Project 13



Project Year : 2021 - 2022

Type :

Residential Interiors

Built up Area : 15000 sq ft.

Scope Of Work:

Interior Design/ Lighting / MEP Services.



Mr. Sethi's Residence

Location : Nagpur

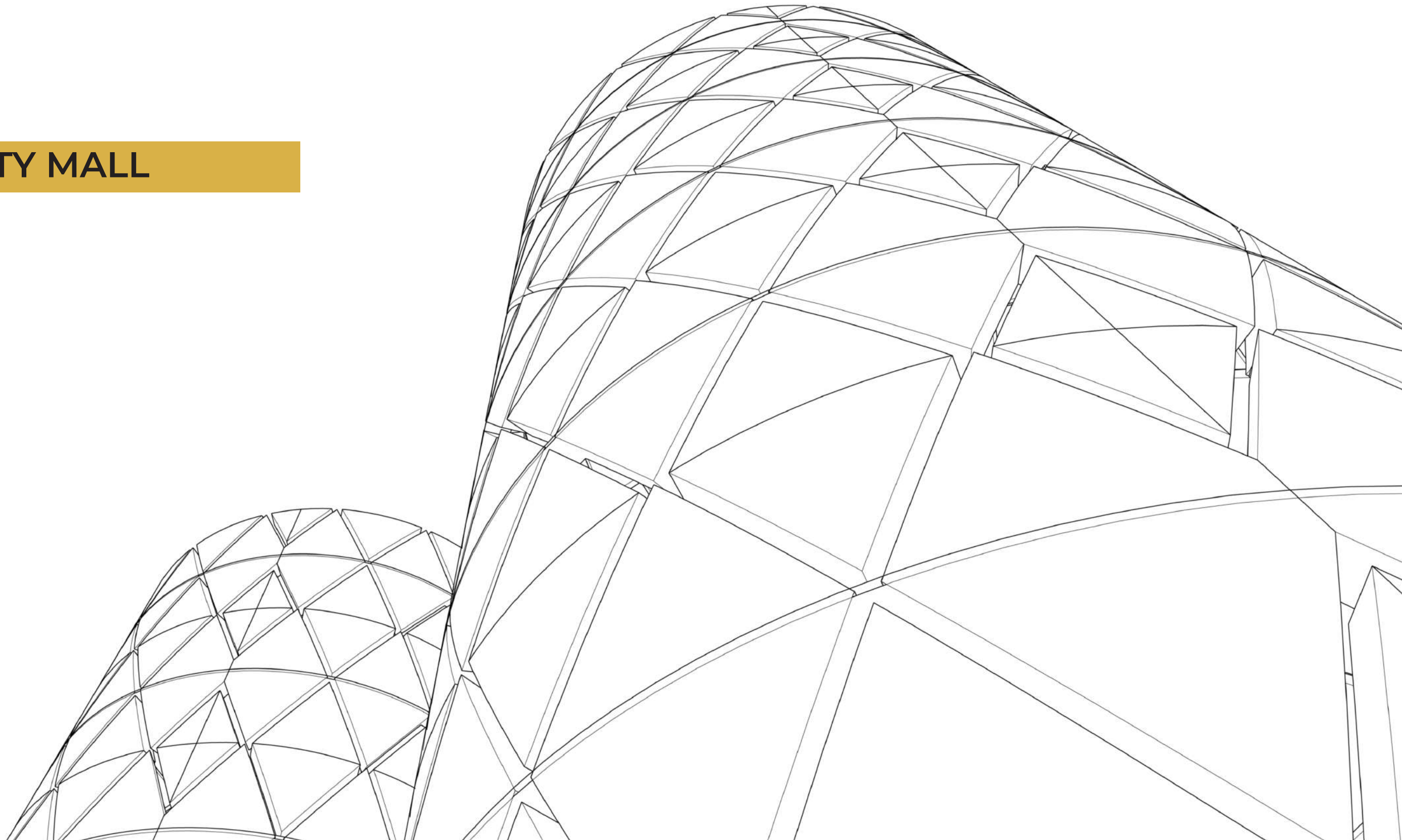
Mr. Sethi's house, located in Nagpur's upscale Civil Lines area, spans 15,000 sq ft across three floors, each covering approximately 5000 sq ft, plus a terrace garden. The ground floor, dedicated to Mr. Sethi, features a double-height living room, three bedrooms, and a dining area adjoining a modern kitchen. The upper floors are designated for his sons, while the terrace garden is designed for hosting dinners and parties for friends & family. The interiors showcase a minimalist and modern aesthetic with Italian marble flooring and light wood fluted wall panels, blending style and functionality to suit Mr. Sethi's lifestyle needs.



DESIGN EDIT

PROJECTS

AGORA CITY MALL



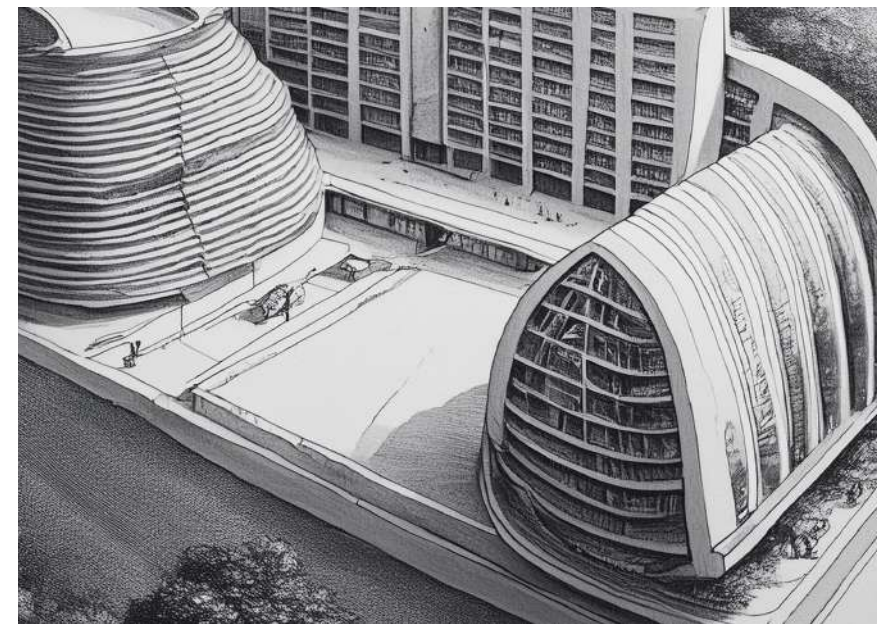
Project 14



Agora City Centre

Location : Vadodara

In Vadodara, Gujarat's inaugural luxury retail and entertainment complex, Agora City Centre spans 600,000 square feet and features distinguished brands like H&M, Starbucks, Shoppers Stop, Lifestyle, Westside, Zudio, Cinepolis, Home Centre, and Hometown. Its elegant design resonates with the city's heritage, making it an iconic structure. With its blend of premium fashion, gourmet restaurants, upscale cafes, luxurious spas, and salons, Agora City Centre offers a refined shopping experience and has swiftly gained acclaim as a prime destination for both local and visiting patrons.



Project Year : 2020

Type :

Design Edit

Built up Area :

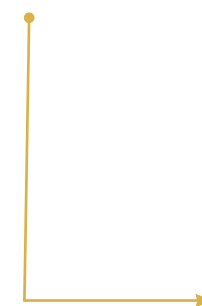
6,00,000 sq ft.

Scope Of Work :

Design Edit &

Fit Out

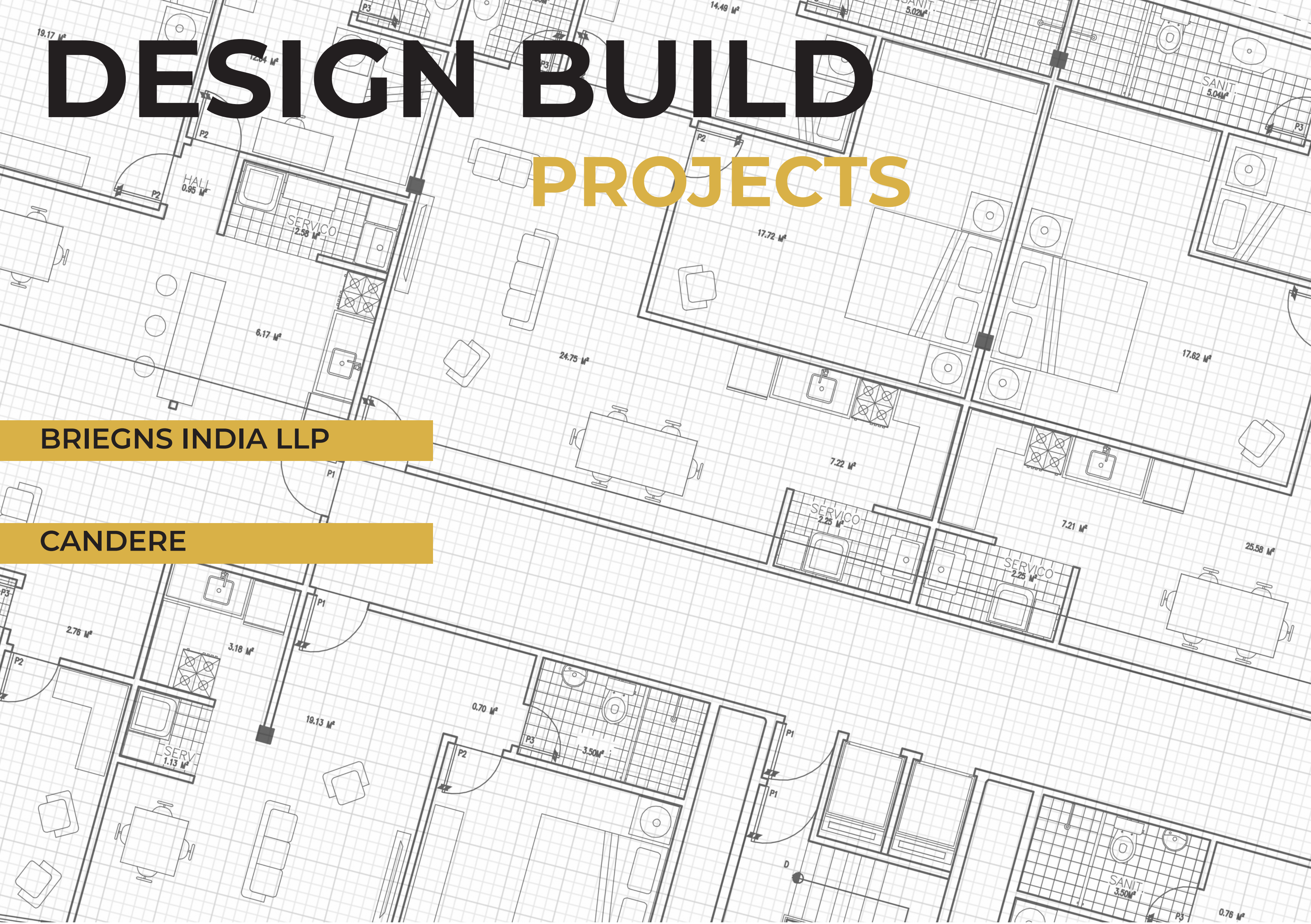
Management



DESIGN BUILD PROJECTS

BRIEGNS INDIA LLP

CANDERE

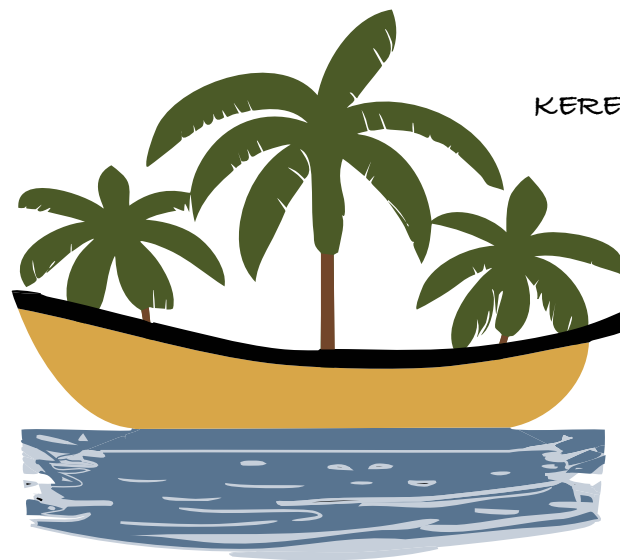


Project 15

Briegns India LLP

Location : Kozhikode

We designed a modern, nature-inspired office for Breigns LLP in Kozhikode! 25 Open workstations with white and wood surfaces create a collaborative, airy space. Glass cabins ensure privacy while maintaining transparency. The compact cafeteria and conference room echo the open design with a touch of green. Unobstructed windows and strategically placed greenery bathe the space in natural light and connect it to Kerala's beauty. This modern workspace prioritizes collaboration, simplicity, and sustainability, fostering productivity in a nature-inspired setting.



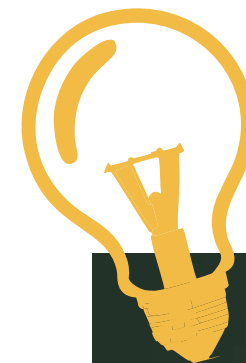
KERELA INSPIRED

GREEN TOUCHES



WOOD WORKSTATIONS

Project Year : 2023 - 2024
Type : Design Built
Built up Area : 3,000 sq ft.
Scope Of Work : Turnkey.



CONFERENCE ROOM



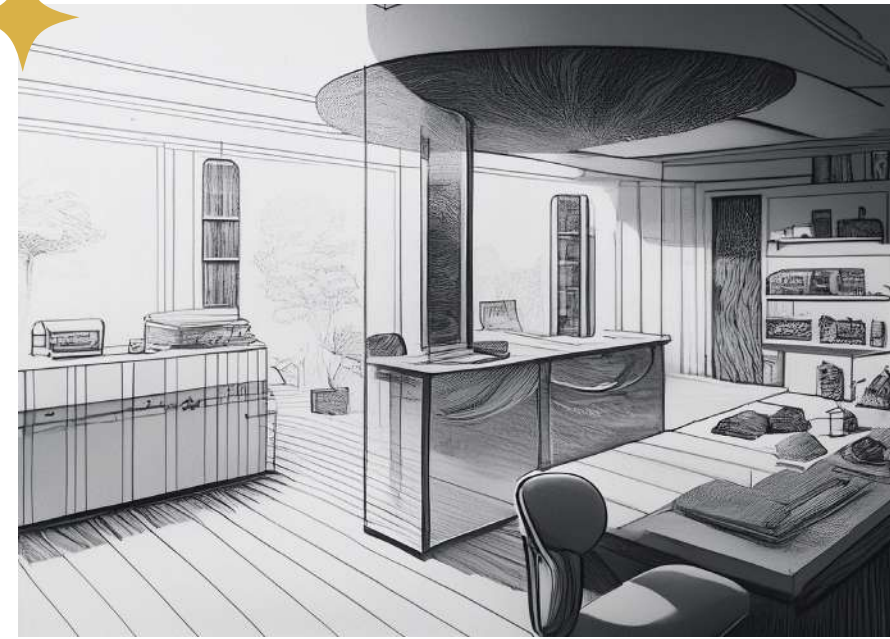


Project 16

Candere

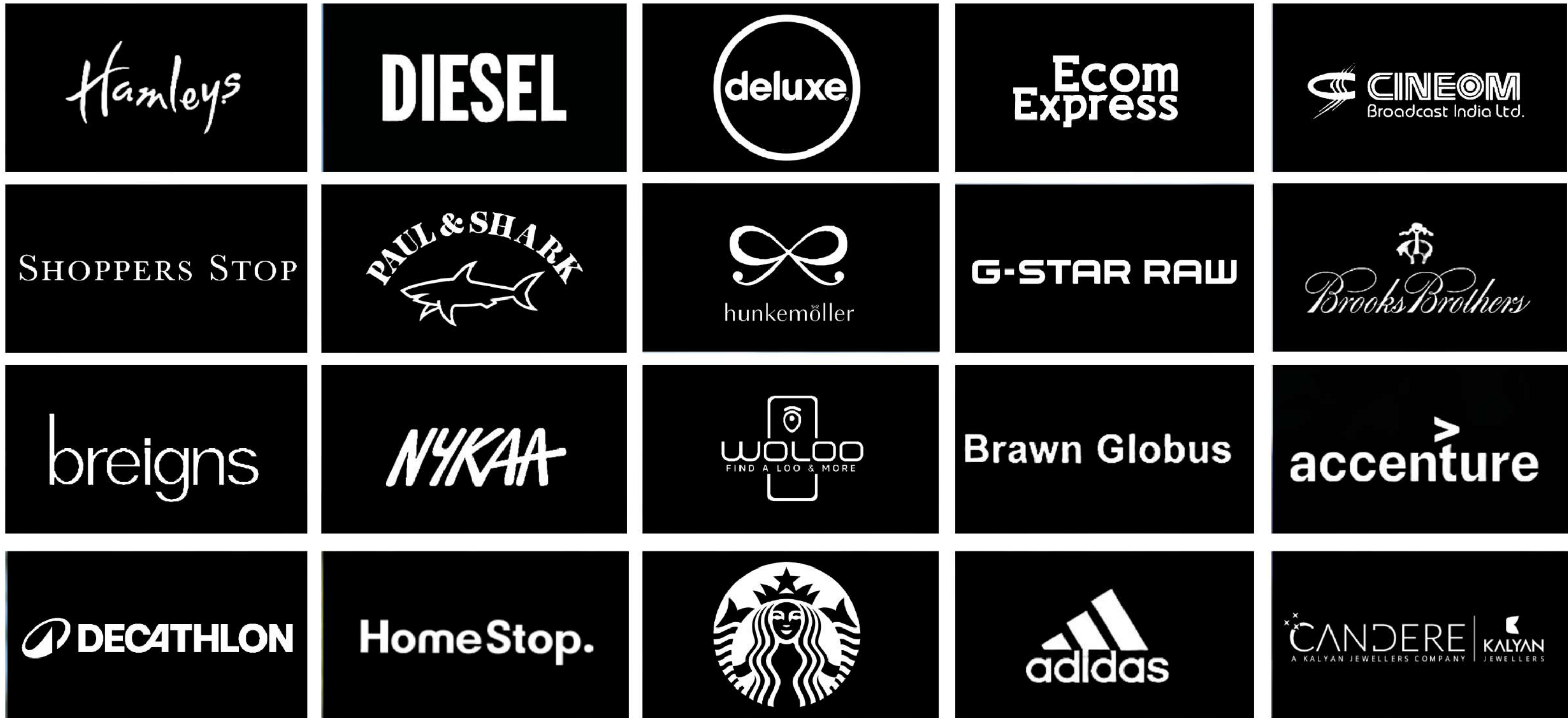
Location : Mumbai

Candere, a high-end jewellery showroom specialized on diamond jewellery and a subsidiary of Kalyan Jewellers, showcases an interior design inspired by its logo, incorporating blue and copper finishes. The showroom features a distinctive lighting element with twinkling stars, enhancing its unique appeal. We introduced a new concept for jewellery display counters, wall displays, and customer convenience to create an exceptional shopping experience. The 3000 sq ft store, situated on the ground floor of a bustling market in Borivali West, Mumbai, offers excellent visibility from the street. Its striking façade, adorned with back-painted blue glass and the cut-letter Candere logo, conveys a premium and sophisticated look.



Project Year :
2022 - 2023
Type : Design Built
Built up Area :
4,000 sq ft.
Scope Of Work:
New Concept
Development /
Interior Design/
Lighting / MEP
Services / PMC.

OUR CLIENTS



TESTIMONIALS

Discover What Our Clients Say



LET'S CONNECT



9372471336



info@studioaird.com



studioaird.com



MUMBAI

THANE

BHOPAL

NEW DELHI

GOA